



# Quick Connects



## QC & QF Series

- ☒ Pressure: Up to 6000 psig (413 bar)
- ☒ Temperature: -40 to 450° F (-40 to 232° C)

- ☒ Single-End Shut Off, Double End Shut Off & Full Flow



At SSP, we are proud to be an American manufacturing success story.

**100% of our products are made in America.** All of our manufacturing is performed in our 165,000 sq. ft. facility located near Cleveland, Ohio. Our facility is the largest vertically integrated, single-site operation in the industry. In addition to manufacturing and assembly, we have closed die forging, tool & die design, product development and testing operations under the same roof with the customer service and executive teams.

**Made in America is good business.** Not only do we make everything in America, we use American suppliers too. Buying American allows us to have better quality control and a more reliable supply chain. We can work more closely within our walls and with our suppliers to improve quality, reduce costs, and shorten lead times, which means faster service and better products for you.

**SSP** Industry Standard Products  
*Made Better*

## TABLE of CONTENTS

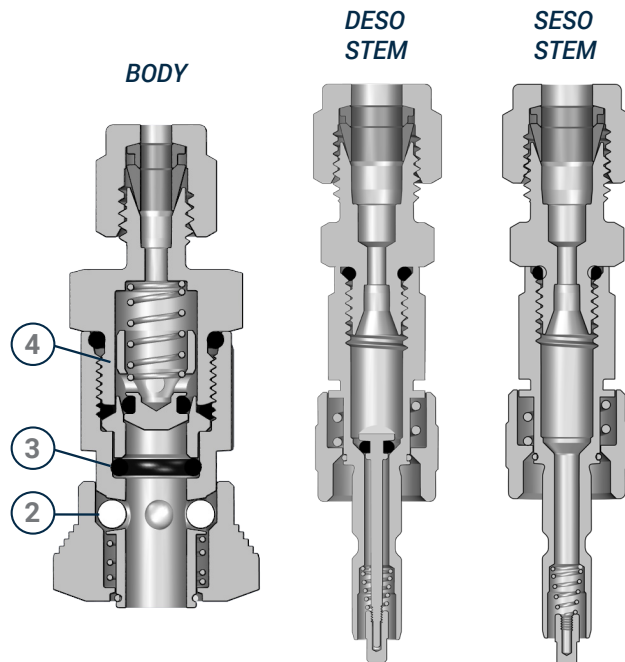
|   |   |                                    |    |
|---|---|------------------------------------|----|
| QC Series Introduction .....            | 3 | QC Plugs & Caps .....              | 8  |
| QC Features .....                       | 3 | QC How to Order .....              | 9  |
| QC Materials of Construction .....      | 4 | QF Series Introduction .....       | 10 |
| QC Temperature and Pressure Ratings ... | 4 | QF Materials of Construction ..... | 11 |
| QC Part Numbers and Dimensions Table .. | 5 | QF Plugs & Caps .....              | 11 |
| QC Bodies .....                         | 6 | QF Stems .....                     | 12 |
| QC Stem & Body Keys .....               | 7 | QF Bodies .....                    | 13 |
|   |   | QF How to Order .....              | 14 |

## QC Series

SSP Quick Connects are a convenient solution for easily connecting and disconnecting fluid lines in grab sample systems, laboratories, and other applications that require frequent connections and disconnections. These connectors offer a leak-tight seal without the need for tools. They are available in various materials such as 316 SS, Alloy 400, Alloy C-276, and Brass, and can withstand a maximum working pressure of 3000 psig (206 bar) and temperatures ranging from -15 to 350° F. The Quick Connects feature different coupling types including DESO (Double End Shut Off), SESO (Single End Shut Off), and full flow, and can be connected to Duolok®, Unilok®, Griplok® tube fittings, and NPT pipe end connections. Additionally, they come with stem plugs and body caps to protect against damage and contamination. The push-to-connect design eliminates the need for tools, and keyed couplings are employed to differentiate between different media and avoid accidental connections to the wrong media. Choose Quick Connects for your specific applications.

## Product Design

- 1 **AUTOMATIC COUPLING**
  - Push to connect design means no tools are required
- 2 **LOCKING BALL DESIGN**
  - Easily connects & disconnects
- 3 **O-RING SEAL**
  - O-ring positioned to minimize spillage
- 4 **VALVE STOPS**
  - Prevent flow checking during flow surges

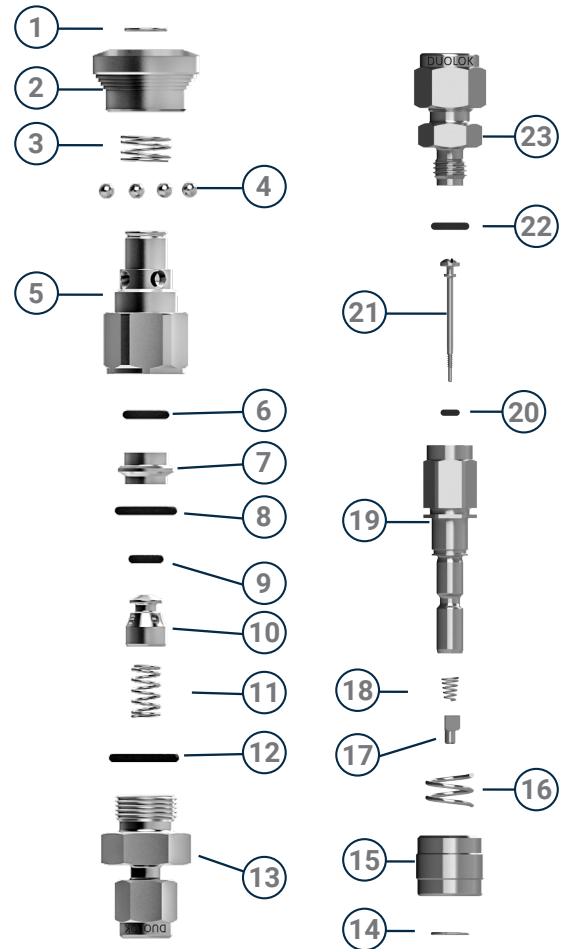


## QC Series Materials of Construction

| ID | Component        | 316 SS                  | Brass                   |
|----|------------------|-------------------------|-------------------------|
| 1  | Sleeve Snap Ring | 316 SS                  | 316 SS                  |
| 2  | Sleeve           | 316 SS                  | Brass                   |
| 3  | Sleeve Spring    | 316 SS                  | 316 SS                  |
| 4  | Locking Balls    | 316 SS                  | 316 SS                  |
| 5  | Body *           | 316 SS                  | Brass                   |
| 6  | Stem O-Ring *    | Fluorocarbon FKM        | Nitrile                 |
| 7  | Insert *         | 316 SS                  | Brass                   |
| 8  | Insert O-Ring *  | Fluorocarbon FKM        | Nitrile                 |
| 9  | Valve O-Ring *   | Fluorocarbon FKM        | Nitrile                 |
| 10 | Valve *          | 316 SS                  | Brass                   |
| 11 | Valve Spring *   | 316 SS                  | 316 SS                  |
| 12 | Adapter O-Ring * | Fluorocarbon FKM        | Nitrile                 |
| 13 | Adapter *        | 316 SS                  | Brass                   |
| 14 | Sleeve Snap Ring | 316 SS                  | 316 SS                  |
| 15 | Sleeve           | 316 SS                  | Brass                   |
| 16 | Sleeve Spring    | 316 SS                  | 316 SS                  |
| 17 | Valve Cap *      | 316 SS                  | Brass                   |
| 18 | Valve Spring *   | 316 SS                  | 316 SS                  |
| 19 | Stem Body *      | 316 SS                  | Brass                   |
| 20 | Valve O-Ring *+  | Fluorocarbon FKM        | Nitrile                 |
| 21 | Valve *+         | 316 SS                  | Brass                   |
| 22 | Adapter O-Ring * | Fluorocarbon FKM        | Nitrile                 |
| 23 | Adapter *        | 316 SS                  | Brass                   |
|    | Lubricants       | Silicone and PTFE Based | Silicone and PTFE Based |

\*Wetted Components

+DESO only



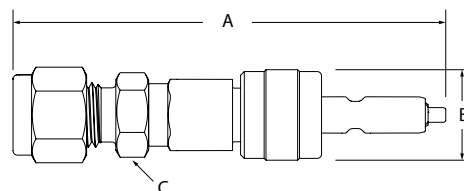
## QC Series Temperature - Pressure

| Temperature<br>°F                          | 316 SS               |      |     | Brass |      |     |
|--|----------------------|------|-----|-------|------|-----|
|  | QC4                  | QC6  | QC8 | QC4   | QC6  | QC8 |
|  | Pressure Rating psig |      |     |       |      |     |
| Coupled                                    |                      |      |     |       |      |     |
| 70   | 3000                 | 1500 | 750 | 2000  | 1000 | 500 |
| 250  | -                    | -    | -   | 250   | 250  | 250 |
| 400  | 500                  | 400  | 300 | -     | -    | -   |
| Uncoupled and During Coupling & Uncoupling |                      |      |     |       |      |     |
| 70   | 250                  | 250  | 250 | 250   | 250  | 250 |

# Part Numbers and Dimensions

## Stems

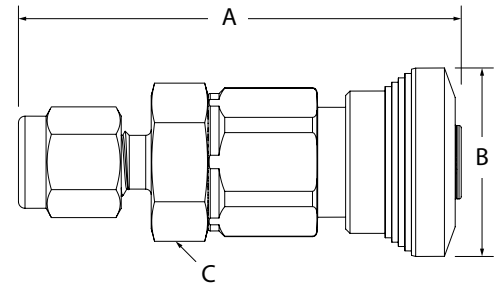
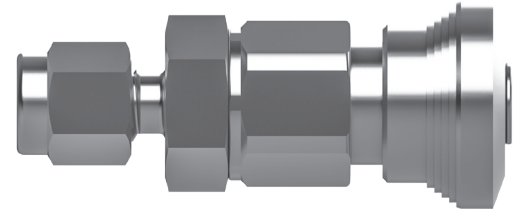
| End Connection          |      | Basic Ordering Number | Dimensions in. (mm) |                 |                 |                   |
|-------------------------|------|-----------------------|---------------------|-----------------|-----------------|-------------------|
| Inlet/Outlet            | Size |                       | Connector Size      | A               | B               | C                 |
| Fractional Tube Fitting | DESO | QC4-D-D2              | 1/8                 | 2.82<br>(71.63) | 0.62<br>(15.75) | 7/16<br>(11.11)   |
|                         |      | QC4-D-D4              | 1/4                 | 2.94<br>(74.68) | 0.62<br>(15.75) | 1/12<br>(12.7)    |
|                         |      | QC6-D-D6              | 3/8                 | 3.05<br>(77.47) | 0.74<br>(18.8)  | 5/8<br>(15.88)    |
|                         |      | QC8-D-D8              | 1/2                 | 3.27<br>(83.06) | 0.87<br>(22.1)  | 13/16<br>(20.64)  |
| Female NPT              | DESO | QC4-D-2PF             | 1/8                 | 2.55<br>(64.77) | 0.62<br>(15.75) | 9/16<br>(14.29)   |
|                         |      | QC4-D-4PF             | 1/4                 | 2.74<br>(69.6)  | 0.62<br>(15.75) | 3/4<br>(19.05)    |
|                         |      | QC6-D-4PF             | 1/4                 | 2.76<br>(70.1)  | 0.74<br>(18.8)  | 3/4<br>(19.05)    |
|                         |      | QC6-D-6PF             | 3/8                 | 2.83<br>(71.88) | 0.74<br>(18.8)  | 7/8<br>(22.23)    |
|                         |      | QC8-D-8PF             | 1/2                 | 3.37<br>(85.6)  | 0.87<br>(22.1)  | 1-1/16<br>(26.99) |
| Male NPT                | DESO | QC4-D-2PM             | 1/8                 | 2.61<br>(66.29) | 0.62<br>(15.75) | 7/16<br>(11.11)   |
|                         |      | QC4-D-4PM             | 1/4                 | 2.82<br>(71.63) | 0.62<br>(15.75) | 9/16<br>(14.29)   |
|                         |      | QC6-D-4PM             | 1/4                 | 2.84<br>(72.14) | 0.74<br>(18.8)  | 9/16<br>(14.29)   |
|                         |      | QC6-D-6PM             | 3/8                 | 2.86<br>(72.64) | 0.74<br>(18.8)  | 11/16<br>(17.46)  |
|                         |      | QC8-D-8PM             | 1/2                 | 3.46<br>(87.88) | 0.87<br>(22.1)  | 7/8<br>(22.23)    |
| Fractional Tube Fitting | SESO | QC4-S-D2              | 1/8                 | 2.82<br>(71.63) | 0.62<br>(15.75) | 7/16<br>(11.11)   |
|                         |      | QC4-S-D4              | 1/4                 | 2.94<br>(74.68) | 0.62<br>(15.75) | 1/2<br>(12.7)     |
|                         |      | QC6-S-D6              | 3/8                 | 3.05<br>(77.47) | 0.74<br>(18.8)  | 5/8<br>(15.88)    |
|                         |      | QC8-S-D8              | 1/2                 | 3.27<br>(83.06) | 0.87<br>(22.1)  | 13/16<br>(20.64)  |
| Female NPT              | SESO | QC4-S-2PF             | 1/8                 | 2.55<br>(64.77) | 0.62<br>(15.75) | 9/16<br>(14.29)   |
|                         |      | QC4-S-4PF             | 1/4                 | 2.74<br>(69.6)  | 0.62<br>(15.75) | 3/4<br>(19.05)    |
|                         |      | QC6-S-4PF             | 1/4                 | 2.76<br>(70.1)  | 0.74<br>(18.8)  | 3/4<br>(19.05)    |
|                         |      | QC6-S-6PF             | 3/8                 | 2.83<br>(71.88) | 0.74<br>(18.8)  | 7/8<br>(22.23)    |
|                         |      | QC8-S-8PF             | 1/2                 | 3.37<br>(85.6)  | 0.87<br>(22.1)  | 1-1/16<br>(26.99) |
| Male NPT                | SESO | QC4-S-2PM             | 1/8                 | 2.61<br>(66.29) | 0.62<br>(15.75) | 7/16<br>(11.11)   |
|                         |      | QC4-S-4PM             | 1/4                 | 2.82<br>(71.63) | 0.62<br>(15.75) | 9/16<br>(14.29)   |
|                         |      | QC6-S-4PM             | 1/4                 | 2.84<br>(72.14) | 0.74<br>(18.8)  | 9/16<br>(14.29)   |
|                         |      | QC6-S-6PM             | 3/8                 | 2.86<br>(72.64) | 0.74<br>(18.8)  | 11/16<br>(17.46)  |
|                         |      | QC8-S-8PM             | 1/2                 | 3.46<br>(87.88) | 0.87<br>(22.1)  | 7/8<br>(22.23)    |



# Bodies

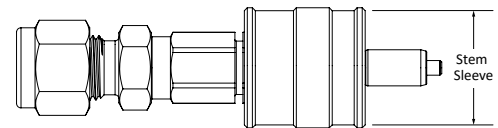
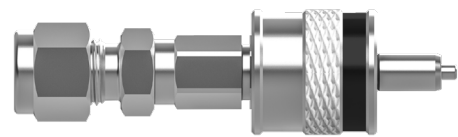
## Part Numbers and Dimensions

| End Connection          | Basic Ordering Number | Dimensions in. (mm) |                 |                 |                   |
|-------------------------|-----------------------|---------------------|-----------------|-----------------|-------------------|
|                         |                       | Connector Size      | A               | B               | C                 |
| Fractional Tube Fitting | QC4-B-D2              | 1/8                 | 2.02<br>(51.31) | 2.02<br>(51.31) | 5/8<br>(15.88)    |
|                         | QC4-B-D4              | 1/4                 | 2.11<br>(53.59) | 2.11<br>(53.59) | 5/8<br>(15.88)    |
|                         | QC6-B-D6              | 3/8                 | 2.38<br>(60.45) | 2.38<br>(60.45) | 3/4<br>(19.05)    |
|                         | QC8-B-D8              | 1/2                 | 3.30<br>(83.82) | 3.30<br>(83.82) | 5/16<br>(23.81)   |
| Female NPT              | QC4-B-2PF             | 1/8                 | 1.94<br>(49.28) | 1.94<br>(49.28) | 5/8<br>(15.88)    |
|                         | QC4-B-4PF             | 1/4                 | 2.13<br>(54.1)  | 2.13<br>(54.1)  | 3/4<br>(19.05)    |
|                         | QC6-B-4PF             | 1/4                 | 2.34<br>(59.44) | 2.34<br>(59.44) | 3/4<br>(19.05)    |
|                         | QC6-B-6PF             | 3/8                 | 2.41<br>(61.21) | 2.41<br>(61.21) | 7/8<br>(22.23)    |
|                         | QC8-B-8PF             | 1/2                 | 2.96<br>(75.18) | 2.96<br>(75.18) | 1-1/16<br>(26.99) |
| Male NPT                | QC4-B-2PM             | 1/8                 | 1.80<br>(45.72) | 1.80<br>(45.72) | 5/8<br>(15.88)    |
|                         | QC4-B-4PM             | 1/4                 | 1.98<br>(50.29) | 1.98<br>(50.29) | 5/8<br>(15.88)    |
|                         | QC6-B-4PM             | 1/4                 | 2.20<br>(55.88) | 2.20<br>(55.88) | 3/4<br>(19.05)    |
|                         | QC6-B-6PM             | 3/8                 | 2.20<br>(55.88) | 2.20<br>(55.88) | 3/4<br>(19.05)    |
|                         | QC8-B-8PM             | 1/2                 | 2.56<br>(65.02) | 2.56<br>(65.02) | 5/16<br>(23.81)   |



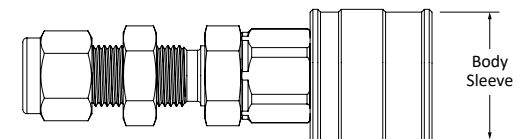
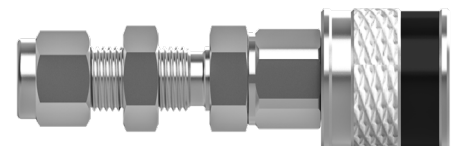
# Stem Keys

| Quick Connect Key Numbers and Stem Sleeve Outside Diameters |                        |                        |                        |
|---|------------------------|------------------------|------------------------|
| Key Number and Color  | QC4                    | QC6                    | QC8                    |
|   | Ø Stem Sleeve in. (mm) | Ø Stem Sleeve in. (mm) | Ø Stem Sleeve in. (mm) |
| K1 Black  | 0.82 (20.83)           | 0.99 (25.15)           | 1.11 (28.19)           |
| K2 Orange   | 0.85 (21.59)           | 1.02 (25.91)           | 1.14 (28.96)           |
| K3 Green  | 0.88 (22.35)           | 1.05 (26.67)           | 1.17 (29.72)           |
| K4 Yellow   | 0.91 (23.11)           | 1.08 (27.43)           | 1.20 (30.48)           |
| K5 Blue   | 0.94 (23.88)           | 1.11 (28.19)           | 1.23 (31.24)           |
| K6 White  | 0.97 (24.64)           | 1.14 (28.96)           | 1.26 (32)              |
| K7 Purple   | 1.00 (25.4)            | 1.17 (29.72)           | 1.29 (32.77)           |
| K8 Brown  | 1.03 (26.16)           | 1.2 (30.48)            | 1.32 (33.53)           |



# Body Keys

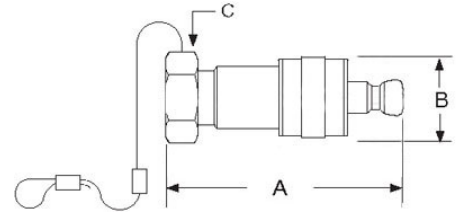
| Quick Connect Key Numbers and Body Sleeve Outside Diameters |                        |                        |                        |
|---|------------------------|------------------------|------------------------|
| Key Number and Color  | QC4                    | QC6                    | QC8                    |
|   | Ø Body Sleeve in. (mm) | Ø Body Sleeve in. (mm) | Ø Body Sleeve in. (mm) |
| K1 Black  | 0.96 (24.38)           | 1.13 (28.7)            | 1.26 (32)              |
| K2 Orange   | 0.99 (25.15)           | 1.16 (29.46)           | 1.29 (32.77)           |
| K3 Green  | 1.02 (25.91)           | 1.19 (30.23)           | 1.32 (33.53)           |
| K4 Yellow   | 1.05 (26.67)           | 1.22 (30.99)           | 1.35 (34.29)           |
| K5 Blue   | 1.08 (27.43)           | 1.25 (31.75)           | 1.38 (35.05)           |
| K6 White  | 1.11 (28.19)           | 1.28 (32.51)           | 1.41 (35.81)           |
| K7 Purple   | 1.14 (28.96)           | 1.31 (33.27)           | 1.44 (36.58)           |
| K8 Brown  | 1.17 (29.72)           | 1.35 (34.29)           | 1.47 (37.34)           |



# Plugs and Caps

**Stem Plugs**

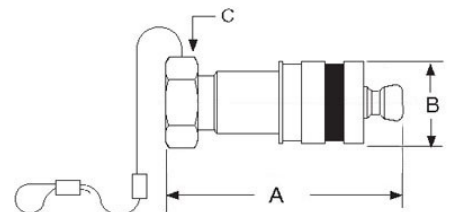
| Series | Basic Ordering Number | Body Size | A in. (mm)   | B in. (mm)   | C in. (mm)    |
|--------|-----------------------|-----------|--------------|--------------|---------------|
| QC4    | QC4-SP                | 1/4       | 2.25 (57.15) | 0.62 (15.75) | 9/16 (14.29)  |
| QC6    | QC6-SP                | 3/8       | 2.47 (62.74) | 0.74 (18.8)  | 11/16 (17.46) |
| QC8    | QC8-SP                | 1/2       | 3.38 (85.85) | 0.87 (22.1)  | 7/8 (22.23)   |



**Keyed Stem Plugs**

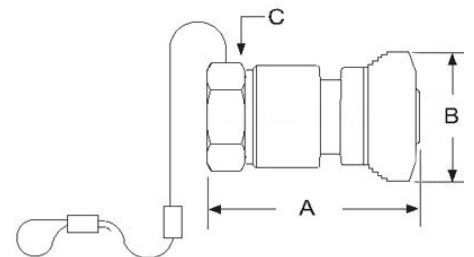
| Series | Basic Ordering Number | Body Size | A in. (mm)   | B in. (mm) | C in. (mm)    |
|--------|-----------------------|-----------|--------------|------------|---------------|
| QC4    | QC4-SP                | 1/4       | 2.25 (57.15) | *          | 9/16 (14.29)  |
| QC6    | QC6-SP                | 3/8       | 2.47 (62.74) | *          | 11/16 (17.46) |
| QC8    | QC8-SP                | 1/2       | 3.38 (85.85) | *          | 7/8 (22.23)   |

\* See page 7 for full chart



**Body Caps**

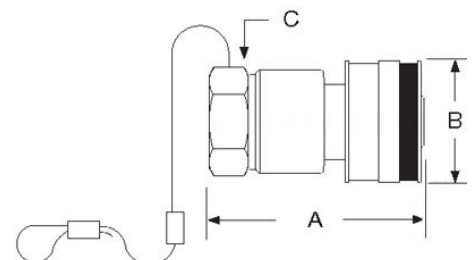
| Series | Basic Ordering Number | Body Size | A in. (mm)   | B in. (mm)   | C in. (mm)    |
|--------|-----------------------|-----------|--------------|--------------|---------------|
| QC4    | QC4-BC                | 1/4       | 1.42 (36.07) | 0.86 (21.84) | 9/16 (14.29)  |
| QC6    | QC6-BC                | 3/8       | 1.63 (41.4)  | 0.98 (24.89) | 11/16 (17.46) |
| QC8    | QC8-BC                | 1/2       | 2.01 (51.05) | 1.21 (30.73) | 7/8 (22.23)   |



**Keyed Body Caps**

| Series | Basic Ordering Number | Body Size | A in. (mm)   | B in. (mm) | C in. (mm)    |
|--------|-----------------------|-----------|--------------|------------|---------------|
| QC4    | QC4-BC                | 1/4       | 1.42 (36.07) | *          | 9/16 (14.29)  |
| QC6    | QC6-BC                | 3/8       | 1.63 (41.4)  | *          | 11/16 (17.46) |
| QC8    | QC8-BC                | 1/2       | 2.01 (51.05) | *          | 7/8 (22.23)   |

\* See page 7 for full chart





# How to Order

## Ordering Instructions

- 1 Select the basic ordering number from the Part Numbers and Dimensions table based on the end connections and orifice size for the valve. *Example: QC4-D-D4-316*
- 2 Select the body or stem designator, then add it to the base part number. *Example: QC4-D-D4-316*
- 3 Select the inlet type and size designator, then add it the part number. *Example: QC4-D-D4-316*
- 4 Select the material designator, then add it the part number. *Example: QC4-D-D4-316*
- 5 Select the valve designator, then add it the part number. *Example: QC4-D-D4-316-FF*
- 6 Select the O-ring designator. *Example: QC4-D-D4-316-KZ*
- 7 Select the color key to prevent accidental intermixing of different lines. *Example: QC4-D-D4-316-KZ-K1*

### Stems

|          |          |          |          |          |          |
|----------|----------|----------|----------|----------|----------|
| <b>A</b> | <b>B</b> | <b>C</b> | <b>D</b> | <b>E</b> | <b>F</b> |
| QC4      | -D       | -D4      | -316     | -KZ      | -K1      |

### Caps & Plugs

|          |          |          |          |
|----------|----------|----------|----------|
| <b>A</b> | <b>B</b> | <b>D</b> | <b>F</b> |
| QC4      | -SP      | -316     | -K1      |

### Bodies

|          |          |          |          |          |          |          |
|----------|----------|----------|----------|----------|----------|----------|
| <b>A</b> | <b>B</b> | <b>C</b> | <b>D</b> | <b>E</b> | <b>F</b> | <b>G</b> |
| QC4      | -B       | -D4      | -316     | -FF      | -KZ      | -K1      |

|          |                       |
|----------|-----------------------|
| <b>A</b> | <b>STEM/BODY SIZE</b> |
| QC4      | 1/4 Connector size    |
| QC6      | 3/8 Connector size    |
| QC8      | 1/2 Connector size    |

|          |                           |
|----------|---------------------------|
| <b>B</b> | <b>CONNECTION TYPE</b>    |
| -B       | Body                      |
| -D       | DESO (Double end shutoff) |
| -S       | SESO (Single end shutoff) |
| -BC      | Body Cap                  |
| -SP      | Stem Plug                 |

|          |                              |
|----------|------------------------------|
| <b>C</b> | <b>INLET TYPE &amp; SIZE</b> |
| -D2      | Duolok Tube Fitting 1/8 in.  |
| -D4      | Duolok Tube Fitting 1/4 in.  |
| -D6      | Duolok Tube Fitting 3/8 in.  |
| -D8      | Duolok Tube Fitting 1/2 in.  |
| -2PF     | Female NPT 1/8 in.           |
| -4PF     | Female NPT 1/4 in.           |
| -6PF     | Female NPT 3/8 in.           |
| -8PF     | Female NPT 1/2 in.           |
| -2PM     | Male NPT 1/8 in.             |
| -4PM     | Male NPT 1/4 in.             |
| -6PM     | Male NPT 3/8 in.             |
| -8PM     | Male NPT 1/2 in.             |

|          |                 |
|----------|-----------------|
| <b>D</b> | <b>MATERIAL</b> |
| -316     | 316 SS          |
| -B       | Brass           |

|          |                        |
|----------|------------------------|
| <b>E</b> | <b>BODY VALVE TYPE</b> |
| (Blank)  | Valved                 |
| -FF      | Full Flow*             |

|          |                   |
|----------|-------------------|
| <b>G</b> | <b>COLOR KEYS</b> |
| -K1      | Black             |
| -K2      | Orange            |
| -K3      | Green             |
| -K4      | Yellow            |
| -K5      | Blue              |
| -K6      | White             |
| -K7      | Purple            |
| -K8      | Brown             |

|          |                           |
|----------|---------------------------|
| <b>F</b> | <b>O-RINGS</b>            |
|          | <b>ALPHABETICAL ORDER</b> |
| (Blank)  | Fluorocarbon FKM          |
| -BN      | Nitrile Buna N            |
| -KZ      | Kalrez® FFKM              |
| -EP      | Ethylene Propylene        |

Kalrez® is a registered trademark of DuPont Performance Elastomers.

\* Full Flow coupler bodies are non-valved. Use with SESO Stems only.

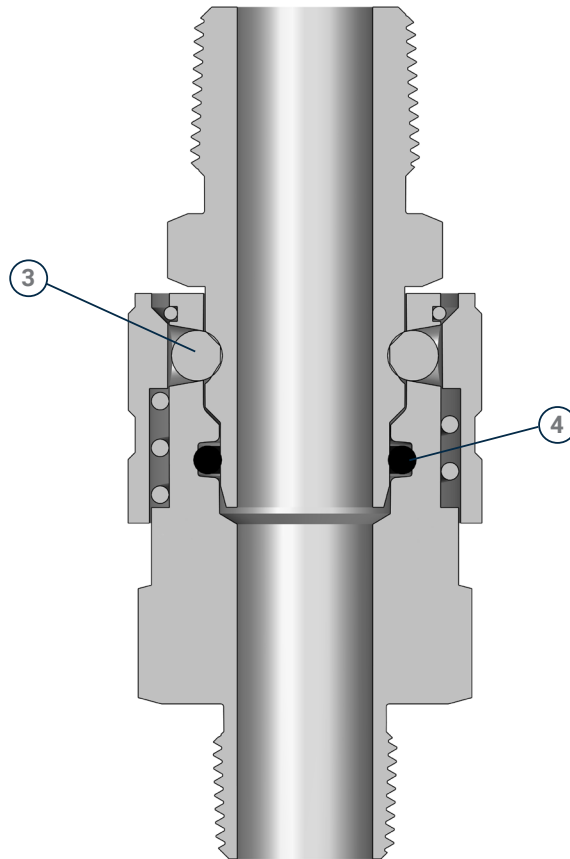
## QF Series

QF Series quick connects provide full flow connections for applications having up-stream and down-stream shut-off capabilities. Typical application for quick connect are venting, draining, mixing and transfer applications. These connectors provide a maximum working pressure (MAWP) of up to 6000 psig and can operate within a temperature range of -40 to 350° F. The Full Flow Quick Connects feature a flow coefficient ranging from 1.7 to 45, ensuring efficient fluid flow. They are available in sizes ranging from ¼ to 1 inch and are constructed using 316 SS material, known for its corrosion resistance and durability. When your applications demand complete full flow connections, then select QF Quick Connects for optimal performance.



## Design

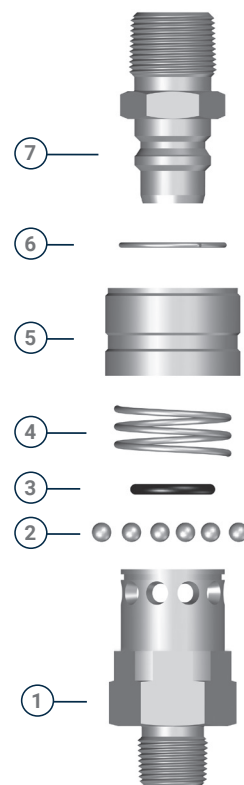
- 1 **COMPACT SIZE**
- 2 **FULL BIDIRECTIONAL FLOW**
- 3 **LOCKING BALL DESIGN**
  - Easy connections and disconnections
- 4 **SINGLE O-RING SEAL**
  - Easily replaced without disassembling the body
- 5 **OPTIONS**
  - Stem Caps and Body Plugs



## QF Series Materials of Construction

| Component  |               | 316 SS                  | Brass                   |
|------------|---------------|-------------------------|-------------------------|
| 1          | Body          | 316 SS                  | Brass                   |
| 2          | Locking Balls | 316 SS                  | 316 SS                  |
| 3          | O-Ring        | Fluorocarbon FKM        | Nitrile                 |
| 4          | Spring        | 302 SS / 316 SS         | 302 SS / 316 SS         |
| 5          | Sleeve        | 316 SS                  | Brass                   |
| 6          | Snap Ring     | 302 SS / 316 SS         | 302 SS / 316 SS         |
| 7          | Stem          | 316 SS                  | Brass                   |
| Lubricants |               | Silicone and PTFE Based | Silicone and PTFE Based |

| Specifications         |                   |     |            |      |                  |            |            |      |
|------------------------|-------------------|-----|------------|------|------------------|------------|------------|------|
| Temperature<br>°F (°C) | 316 SS psig (bar) |     |            |      | Brass psig (bar) |            |            |      |
|                        | QF4               | QF8 | QF12       | QF16 | QF4              | QF8        | QF12       | QF16 |
| 70 (20)                | 6000 (413)        |     | 4000 (275) |      | 4000 (275)       | 3000 (206) | 2000 (137) |      |
| 250 (121)              | 100 (6.8)         |     |            |      |                  |            |            |      |
| 400 (204)              |                   |     |            |      |                  |            |            |      |



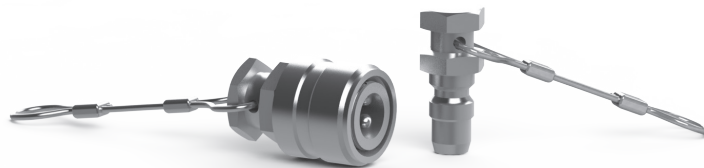
## Caps & Plugs

Use SSP stem plugs and body caps to protect against damage and contaminants when SSP full Flow Quick Connects are uncoupled. Body caps and stem plugs are pressure containing. They can be used to retain system pressure. To order, select a basic ordering number and add the suffix -316 for stainless steel or -B for brass.

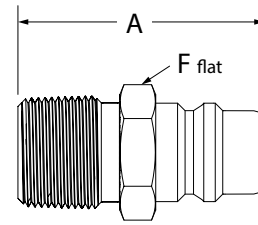
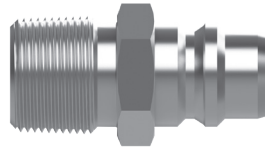
Example: QF4-SP-316

| Series | Basic Ordering Number |           |
|--------|-----------------------|-----------|
|        | Stem Plugs            | Body Caps |
| QF4    | QF4-SP                | QF4-BC    |
| QF8    | QF8-SP                | QF8-BC    |
| QF12   | QF12-SP               | QF12-BC   |
| QF16   | QF16-SP               | QF16-BC   |

| Materials     |          |
|---------------|----------|
| Component     | Material |
| Protector     | 316 SS   |
| Lanyard       | 302 SS   |
| Lanyard Clamp | 304 SS   |

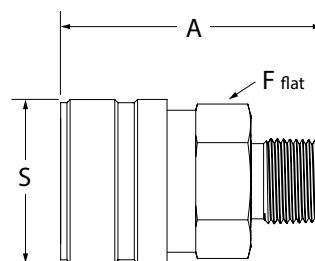
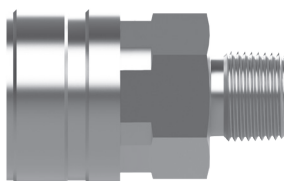


# Stems



| End Connexion           |      | Basic Ordering Number | Dimensions in. (mm)   |                |                |                  |
|-------------------------|------|-----------------------|-----------------------|----------------|----------------|------------------|
| Inlet/Outlet            | Size |                       | Flow Coefficient (CV) | min Orifice    | A              | F                |
| Fractional Tube Fitting | 1/4  | QF4-S-D4              | 2.2                   | 0.19<br>(4.8)  | 1.77<br>(45.0) | 9/16<br>(14.3)   |
|                         | 3/8  | QF4-S-D6              | 2.8                   | 0.24<br>(6.1)  | 1.77<br>(45.0) | 11/16<br>(17.5)  |
|                         | 3/8  | QF8-S-D6              | 2.9                   | 0.28<br>(7.1)  | 1.88<br>(47.8) | 7/8<br>(22.2)    |
|                         | 1/2  | QF8-S-D8              | 13                    | 0.41<br>(10.4) | 1.99<br>(50.5) | 7/8<br>(22.2)    |
|                         | 3/4  | QF12-S-D12            | 26.0                  | 0.62<br>(15.7) | 2.15<br>(54.6) | 1 1/16<br>(27.0) |
|                         | 1    | QF16-S-D16            | 45.0                  | 0.88<br>(22.4) | 2.45<br>(62.2) | 1 3/8<br>(34.9)  |
| Metric Tube Fitting     | 6    | QF4-S-DM6             | 2.2                   | 0.19<br>(4.8)  | 1.77<br>(45.0) | 9/16<br>(14.3)   |
| Female NPT              | 1/4  | QF4-S-4PF             | 1.7                   | 0.24<br>(6.1)  | 1.60<br>(40.6) | 3/4<br>(0.75)    |
|                         | 3/8  | QF4-S-6PF             | 1.7                   | 0.24<br>(6.1)  | 1.67<br>(42.4) | 7/8<br>(22.2)    |
|                         | 3/8  | QF8-S-6PF             | 7.1                   | 0.47<br>(11.9) | 1.59<br>(40.4) | 1 1/16<br>(27.0) |
|                         | 1/2  | QF8-S-8PF             | 11.5                  | 0.50<br>(12.7) | 1.82<br>(46.2) | 1 1/16<br>(27.0) |
|                         | 3/4  | QF12-S-12PF           | 23.6                  | 0.72<br>(18.3) | 2.08<br>(52.8) | 1 5/16<br>(33.3) |
|                         | 1    | QF16-S-16PF           | 39.0                  | 0.88<br>(22.4) | 2.49<br>(63.2) | 1 5/8<br>(41.3)  |
| Female ISO Tapered      | 1/4  | QF4-S-4FRT            | 1.7                   | 0.24<br>(6.1)  | 1.60<br>(40.6) | 3/4<br>(0.75)    |
|                         | 1/2  | QF8-S-8FRT            | 11.5                  | 0.50<br>(12.7) | 1.82<br>(46.2) | 1 1/16<br>(27.0) |
|                         | 1    | QF16-S-16FRT          | 39.0                  | 0.88<br>(22.4) | 2.49<br>(63.2) | 1 5/8<br>(41.3)  |
| Female ISO Parallel     | 1/4  | QF4-S-4FRS            | 1.7                   | 0.24<br>(6.1)  | 1.60<br>(40.6) | 3/4<br>(0.75)    |
|                         | 1/2  | QF8-S-8FRS            | 11.5                  | 0.50<br>(12.7) | 1.82<br>(46.2) | 1 1/16<br>(27.0) |
| Male NPT                | 1/4  | QF4-S-4PM             | 1.7                   | 0.24<br>(6.1)  | 1.59<br>(40.4) | 9/16<br>(14.3)   |
|                         | 3/8  | QF4-S-6PM             | 1.7                   | 0.24<br>(6.1)  | 1.59<br>(40.4) | 11/16<br>(17.5)  |
|                         | 3/8  | QF8-S-6PM             | 7.1                   | 0.41<br>(10.4) | 1.65<br>(41.9) | 7/8<br>(22.2)    |
|                         | 1/2  | QF8-S-8PM             | 11.5                  | 0.50<br>(12.7) | 1.84<br>(46.7) | 7/8<br>(22.2)    |
|                         | 3/4  | QF12-S-12PM           | 23.6                  | 0.72<br>(51.6) | 2.03<br>(51.6) | 1 1/16<br>(27.0) |
|                         | 1    | QF16-S-16PM           | 39.0                  | 0.88<br>(22.4) | 2.35<br>(59.7) | 1 3/8<br>(25.4)  |
| Male ISO Tapered        | 1/4  | QF4-S-4MRT            | 1.7                   | 0.24<br>(6.1)  | 1.59<br>(40.4) | 9/16<br>(14.3)   |
|                         | 1/2  | QF8-S-8MRT            | 11.5                  | 0.50<br>(12.7) | 1.84<br>(46.7) | 7/8<br>(22.2)    |
|                         | 1    | QF16-S-16MRT          | 39.0                  | 0.88<br>(22.4) | 2.35<br>(59.7) | 1 3/8<br>(34.9)  |
| Male ISO Parallel       | 1/4  | QF4-S-4MRS            | 1.7                   | 0.24<br>(6.1)  | 1.60<br>(40.6) | 3/4<br>(0.75)    |
|                         | 1/2  | QF8-S-8MRS            | 11.5                  | 0.50<br>(12.7) | 1.82<br>(46.2) | 1 1/16<br>(27.0) |

# Bodies



| End Connection          |      | Basic Ordering<br>Number | Dimensions in. (mm)      |                |                |                  |                |
|-------------------------|------|--------------------------|--------------------------|----------------|----------------|------------------|----------------|
| Inlet/Outlet            | Size |                          | Flow Coefficient<br>(CV) | min Orifice    | A              | F                | S              |
| Fractional Tube Fitting | 1/4  | QF4-B-D4                 | 2.2                      | 0.19<br>(4.8)  | 1.77<br>(45.0) | 9/16<br>(14.3)   | 0.87<br>(22.1) |
|                         | 3/8  | QF4-B-D6                 | 2.8                      | 0.24<br>(6.1)  | 1.77<br>(45.0) | 11/16<br>(17.5)  | 0.87<br>(22.1) |
|                         | 3/8  | QF8-B-D6                 | 2.9                      | 0.28<br>(7.1)  | 1.88<br>(47.8) | 7/8<br>(22.2)    | 1.30<br>(33.0) |
|                         | 1/2  | QF8-B-D8                 | 13                       | 0.41<br>(10.4) | 1.99<br>(50.5) | 7/8<br>(22.2)    | 1.30<br>(33.0) |
|                         | 3/4  | QF12-B-D12               | 26.0                     | 0.62<br>(15.7) | 2.15<br>(54.6) | 1 1/16<br>(27.0) | 1.66<br>(42.2) |
|                         | 1    | QF16-B-D16               | 45.0                     | 0.88<br>(22.4) | 2.45<br>(62.2) | 1 3/8<br>(34.9)  | 1.88<br>(47.8) |
| Metric Tube Fitting     | 6    | QF4-B-DM6                | 2.2                      | 0.19<br>(4.8)  | 1.77<br>(45.0) | 9/16<br>(14.3)   | 0.87<br>(22.1) |
| Female NPT              | 1/4  | QF4-B-4PF                | 1.7                      | 0.24<br>(6.1)  | 1.60<br>(40.6) | 3/4<br>(0.75)    | 0.87<br>(22.1) |
|                         | 3/8  | QF4-B-6PF                | 1.7                      | 0.24<br>(6.1)  | 1.67<br>(42.4) | 7/8<br>(22.2)    | 0.87<br>(22.1) |
|                         | 3/8  | QF8-B-6PF                | 7.1                      | 0.47<br>(11.9) | 1.59<br>(40.4) | 1 1/16<br>(27.0) | 1.30<br>(33.0) |
|                         | 1/2  | QF8-B-8PF                | 11.5                     | 0.50<br>(12.7) | 1.82<br>(46.2) | 1 1/16<br>(27.0) | 1.30<br>(33.0) |
|                         | 3/4  | QF12-B-12PF              | 23.6                     | 0.72<br>(18.3) | 2.08<br>(52.8) | 1 5/16<br>(33.3) | 1.66<br>(42.2) |
|                         | 1    | QF16-B-16PF              | 39.0                     | 0.88<br>(22.4) | 2.49<br>(63.2) | 1 5/8<br>(41.3)  | 1.88<br>(47.8) |
| Female ISO Tapered      | 1/4  | QF4-B-4FRT               | 1.7                      | 0.24<br>(6.1)  | 1.60<br>(40.6) | 3/4<br>(0.75)    | 0.87<br>(22.1) |
|                         | 1/2  | QF8-B-8FRT               | 11.5                     | 0.50<br>(12.7) | 1.82<br>(46.2) | 1 1/16<br>(27.0) | 1.30<br>(33.0) |
|                         | 1    | QF16-B-16FRT             | 39.0                     | 0.88<br>(22.4) | 2.49<br>(63.2) | 1 5/8<br>(41.3)  | 1.88<br>(47.8) |
| Female ISO Parallel     | 1/4  | QF4-B-4FRS               | 1.7                      | 0.24<br>(6.1)  | 1.60<br>(40.6) | 3/4<br>(0.75)    | 0.87<br>(22.1) |
|                         | 1/2  | QF8-B-8FRS               | 11.5                     | 0.50<br>(12.7) | 1.82<br>(46.2) | 1 1/16<br>(27.0) | 1.30<br>(33.0) |
| Male NPT                | 1/4  | QF4-B-4PM                | 1.7                      | 0.24<br>(6.1)  | 1.59<br>(40.4) | 9/16<br>(14.3)   | 0.87<br>(22.1) |
|                         | 3/8  | QF4-B-6PM                | 1.7                      | 0.24<br>(6.1)  | 1.59<br>(40.4) | 11/16<br>(17.5)  | 0.87<br>(22.1) |
|                         | 3/8  | QF8-B-6PM                | 7.1                      | 0.41<br>(10.4) | 1.65<br>(41.9) | 7/8<br>(22.2)    | 1.30<br>(33.0) |
|                         | 1/2  | QF8-B-8PM                | 11.5                     | 0.50<br>(12.7) | 1.84<br>(46.7) | 7/8<br>(22.2)    | 1.30<br>(33.0) |
|                         | 3/4  | QF12-B-12PM              | 23.6                     | 0.72<br>(51.6) | 2.03<br>(51.6) | 1 1/16<br>(27.0) | 1.66<br>(42.2) |
|                         | 1    | QF16-B-16PM              | 39.0                     | 0.88<br>(22.4) | 2.35<br>(59.7) | 1 3/8<br>(25.4)  | 1.88<br>(47.8) |
| Male ISO Tapered        | 1/4  | QF4-B-4MRT               | 1.7                      | 0.24<br>(6.1)  | 1.59<br>(40.4) | 9/16<br>(14.3)   | 0.87<br>(22.1) |
|                         | 1/2  | QF8-B-8MRT               | 11.5                     | 0.50<br>(12.7) | 1.84<br>(46.7) | 7/8<br>(22.2)    | 1.30<br>(33.0) |
|                         | 1    | QF16-B-16MRT             | 39.0                     | 0.88<br>(22.4) | 2.35<br>(59.7) | 1 3/8<br>(34.9)  | 1.88<br>(47.8) |
| Male ISO Parallel       | 1/4  | QF4-B-4MRS               | 1.7                      | 0.24<br>(6.1)  | 1.60<br>(40.6) | 3/4<br>(0.75)    | 0.87<br>(22.1) |
|                         | 1/2  | QF8-B-8MRS               | 11.5                     | 0.50<br>(12.7) | 1.82<br>(46.2) | 1 1/16<br>(27.0) | 1.30<br>(33.0) |

## Ordering Instructions

- 1 Select the basic ordering number from the Part Numbers and Dimensions table based on the end connections and orifice size for the valve. *Example: QF4-D-D4-316*
- 2 Select the body or stem designator, then add it to the base part number. *Example: QF4-D-D4-316*
- 3 Select the inlet type and size designator, then add it the part number. *Example: QF4-D-D4-316*
- 4 Select the material designator, then add it the part number. *Example: QF4-D-D4-316*
- 5 Select the O-ring designator. *Example: QF4-D-D4-316-KZ*
- 6 Select the color key to prevent accidental intermixing of different lines. *Example: QF4-D-D4-316-KZ-K1*

### Stems

| A   | B  | C   | D    |
|-----|----|-----|------|
| QF4 | -S | -D4 | -316 |

### Caps & Plugs

| A   | B   | D    |
|-----|-----|------|
| QF4 | -SP | -316 |

### Bodies

| A   | B  | C   | D    | E   |
|-----|----|-----|------|-----|
| QF4 | -B | -D4 | -316 | -KZ |

| A    | STEM/BODY SIZE     | B   | CONNECTION TYPE |
|------|--------------------|-----|-----------------|
| QF4  | 1/4 Connector size | -B  | Body            |
| QF8  | 1/2 Connector size | -S  | Stem            |
| QF12 | 3/4 Connector size | -BC | Body Cap        |
| QF16 | 1" Connector size  | -SP | Stem Plug       |

| D    | MATERIAL |
|------|----------|
| -316 | 316 SS   |
| -B   | Brass    |

| E       | O-RINGS ALPHABETICAL ORDER |
|---------|----------------------------|
| (Blank) | Fluorocarbon FKM           |
| -BN     | Nitrile Buna N             |
| -KZ     | Kalrez® FFKM               |
| -EP     | Ethylene Propylene         |

C

INLET TYPE & SIZE

-D2

Duolok Tube Fitting 1/8 in.

-D4

Duolok Tube Fitting 1/4 in.

-D6

Duolok Tube Fitting 3/8 in.

-D8

Duolok Tube Fitting 1/2 in.

-D12

Duolok Tube Fitting 3/4 in.

-D16

Duolok Tube Fitting 1 in.

-2PF

Female NPT 1/8 in.

-4PF

Female NPT 1/4 in.

-6PF

Female NPT 3/8 in.

-8PF

Female NPT 1/2 in.

-12PF

Female NPT 3/4 in.

-16PF

Female NPT 1 in.

-4FRT

Female ISO Tapered 1/4 in.

-8FRT

Female ISO Tapered 1/2 in.

-16FRT

Female ISO Tapered 1 in.

-4FRS

Female ISO Parallel 1/4 in

-8FRS

Female ISO Parallel 1/2 in

-2PM

Male NPT 1/8 in.

-4PM

Male NPT 1/4 in.

-6PM

Male NPT 3/8 in.

-8PM

Male NPT 1/2 in.

-12PM

Male NPT 3/4 in.

-16PM

Male NPT 1 in.

-4FRT

Male ISO Tapered 1/4 in.

-8FRT

Male ISO Tapered 1/2 in.

-16FRT

Male ISO Tapered 1 in.

-4MRS

Male ISO Parallel 1/4 in.

-8MRS

Male ISO Parallel 1/2 in.

Kalrez® is a registered trademark of DuPont Performance Elastomers.

# More SSP Products



## Tube Fittings

*Duolok® and Griplok® (two-ferrule) and Unilok® (single-ferrule) tube fittings ensure leak-tight installation when intermixed with Swagelok®, Hoke® Gyrolok®, and Parker® CPI™ fittings, provided they are used in accordance with SSP Fittings' published installation and service recommendations.*



## Valves

*The SSP valve offering includes ball, check, metering, needle, toggle, plug, bleed, and purge valves for pressures up to 10,000 psig.*



## Quick Connects

*SSP offers single-end shutoff, double-end shutoff, and full-flow quick connects for instrumentation and process applications.*



## Pipe Fittings

*TruFit and TruFit 10K pipe fittings are available in a wide range of weld, threaded and flared connections.*



## Filters

*SSP in-line and tee-type filters trap particles to clean sample fluids and protect sensitive process and analytical instrumentation components and equipment.*



## Tools & Accessories

*SSP TurnPro professional hand tools, power tools and installation training make quality tube system installation faster and easier.*





Founded 1926

Privately owned, third generation business

Modern single-site vertically integrated manufacturing facility

DFARS-compliant raw material

ISO 9001 quality management system

Limited Lifetime Warranty



8250 Boyle Parkway • Twinsburg, OH 44087

330-425-4250 • [www.mySSP.com](http://www.mySSP.com)

©2025 SSP Fittings Corp. All rights reserved.

QFQCPC-25B